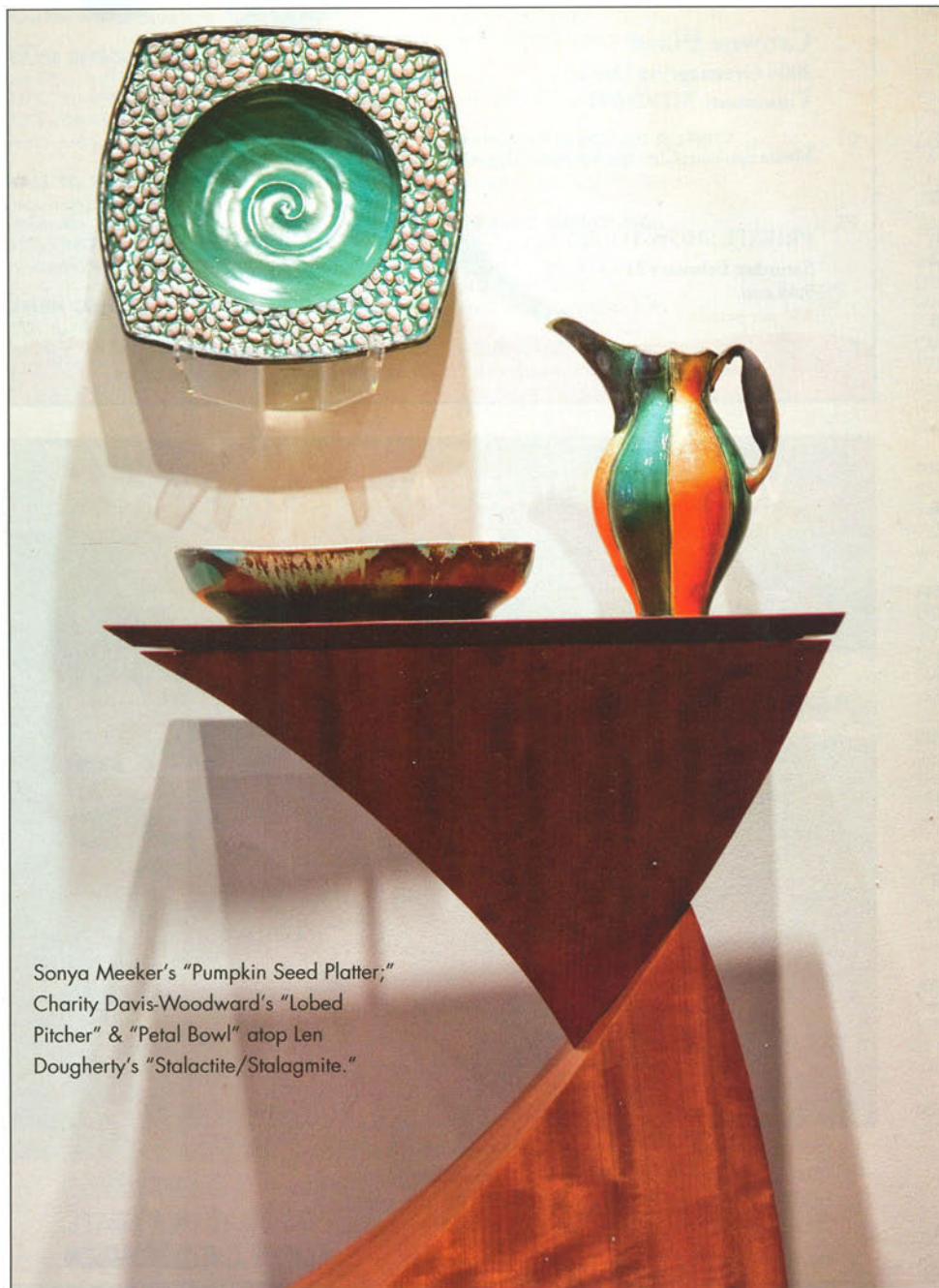


Furniture Art

Tucked into an old Victorian row house in Baltimore's historic Mt. Vernon neighborhood is the Meredith Gallery. Home to "furn-art-ture™" by both emerging local and nationally recognized American artists, the gallery displays and embraces the synthesis of art and furniture with one-of-a-kind, functional pieces.

The latest exhibition, "Adorned," features holiday tables ornamented by beautiful ceramics, and is open to the public through February 27, 2010.



Sonya Meeker's "Pumpkin Seed Platter;"
Charity Davis-Woodward's "Lobed
Pitcher" & "Petal Bowl" atop Len
Dougherty's "Stalacite/Stalagmite."



TOP: Sonya Meeker's "Tomoku" Place
Setting atop Lee Badgers "Peter's Plant
Stand."

CENTER: David Knopp's "Double Set"
(one of two pieces).

BOTTOM: James Moore's "Cabinet on
Stand."

Meredith Gallery: meredithgallery.com
or 410-837-3575